



Scotland Street, Ryhope, Sunderland

£79,950







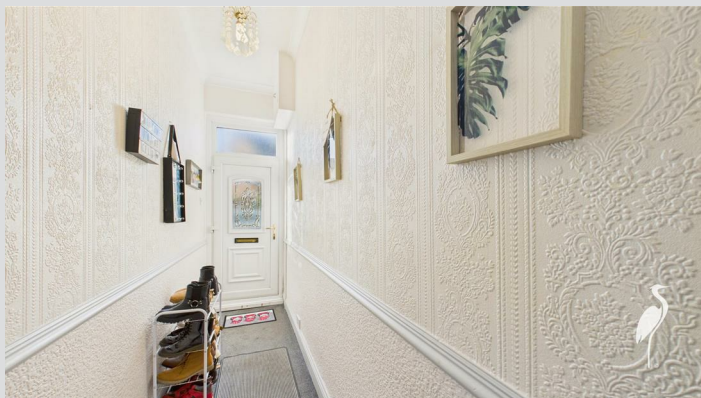
An attractive mid terrace cottage, occupying a superb position within Ryhope Village. Internally the accommodation is all on one level and includes a hall, spacious lounge, a modern fitted kitchen, a contemporary bathroom/wc and a generous double bedroom. Features of note include gas central heating to radiators, UPVC double glazed windows and a yard to the rear. The property is well placed for a range of amenities and is within easy reach of Sunderland City Centre, as well as offering excellent road connections including the A19. Viewing is highly recommended in order to fully appreciate the accommodation on offer.

MAIN ROOMS AND DIMENSIONS

All on Ground Floor

Access via double glazed entrance door.

Entrance Hall



Living Room 12'3" x 13'5"

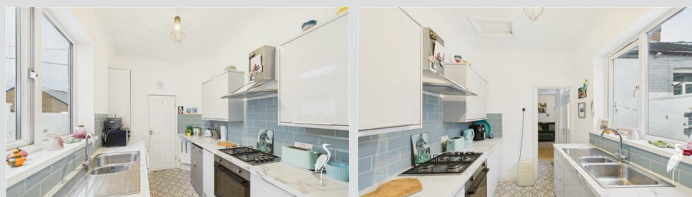


Double glazed window to front, radiator and feature fireplace. Door to lobby.

Lobby

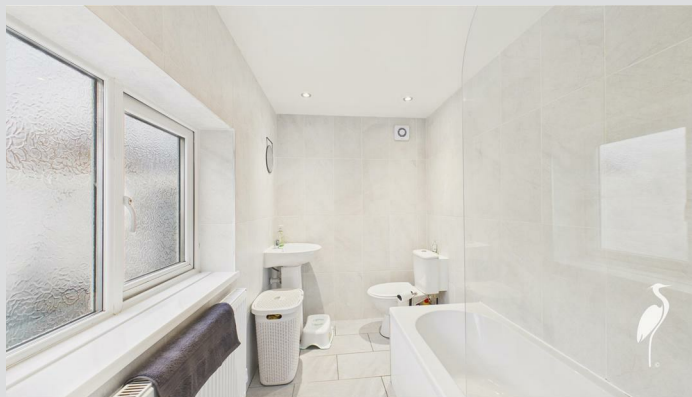
Double glazed door to the courtyard. Built in cupboard.

Kitchen 10'9" x 7'0"



Fitted with an excellent range of contemporary wall and base units with work surfaces over incorporating 1 1/2 bowl sink and drainer unit, integrated appliances include oven and hob, space for under counter fridge and freezer, washing machine, double glazed window to side, radiator and the boiler is housed in matching kitchen unit. Door to bathroom.

Bathroom



Contemporary suite comprising of a low level WC, pedestal washbasin and panel bath with mains shower over, radiator, tiled walls and floor, double glazed window.

Bedroom 14'3" x 11'4"



Double glazed window to front and radiator.

Outside



Courtyard to the rear.

Council Tax Band

The Council Tax Band is Band A.

Tenure Freehold

We are advised by the Vendors that the property is

Visit www.peterheron.co.uk or call 0191 510 3323

Tried. Trusted. Recommended. City Branch 20 Fawcett Street Sunderland SR1 1RH Fulwell Branch 15 Sea Road Fulwell Sunderland SR6 9BS

MAIN ROOMS AND DIMENSIONS

Freehold. Any prospective purchaser should clarify this with their Solicitor.

Important Notice - Particulars

Peter Heron Ltd for themselves and for the vendors of this property whose agents they are, give notice that:- The particulars are set out for general guidance only for the intending Purchasers and do not constitute part of an offer or contract. Whilst we endeavour to make our sales particulars accurate and reliable, if there is anything of particular importance which you feel may influence your decision to purchase, please contact the office and we will be pleased to check the information. Do so particularly, if contemplating travelling some distance to view the property. All descriptions, dimensions, references to conditions and necessary permissions for use and occupation and other details are given in good faith, and are believed to be correct, however any intending purchasers should not rely on them that statements are representations of fact, but must satisfy themselves by inspection or otherwise as to the correctness of each of them. Independent property size verification is recommended.

Lease details, service charges and ground rent (where applicable) are given as a guide only and should be checked and confirmed by your Solicitor prior to exchange of contracts. No person in the employment of Peter Heron Ltd has any authority to make or give any representation or warranty whatever in relation to this property or these particulars, nor to enter into any contract on behalf of Peter Heron Ltd, nor into any contract on behalf of the Vendor. The copyright of all details and photographs remain exclusive to Peter Heron Ltd.

Please note that in the event the purchaser uses the services of Peter Heron Conveyancing in the purchase of their home, Peter Heron Ltd will be paid a completion commission of £300.00 by Movewithus Ltd.

Fawcett Street Viewings

To arrange an appointment to view this property please

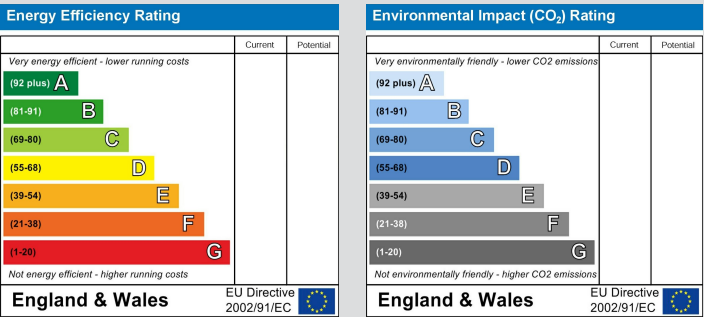
contact our Fawcett Street branch on or book viewing online at peterheron.co.uk

Opening Times

Monday to Friday 9.00am - 5.00pm Saturday 9.00am - 12noon

Ombudsman

Peter Heron Estate Agents are members of The Property Ombudsman and subscribe to The Property Ombudsman Code of Practice.



Visit www.peterheron.co.uk or call 0191 510 3323

Tried. Trusted. Recommended. City Branch 20 Fawcett Street Sunderland SR1 1RH Fulwell Branch 15 Sea Road Fulwell Sunderland SR6 9BS



Approximate total area⁽¹⁾

49.2 m²

529 ft²

(1) Excluding balconies and terraces

Calculations reference the RICS IPMS 3C standard. Measurements are approximate and not to scale. This floor plan is intended for illustration only.

GIRAFFE360